



TestWiz.Net Sample Reports

The following pages show some of the reports available through TestWiz. The reports themselves come in four formats: HTML (the first view on the screen); PDF; Word and Excel.

Before (or after) viewing a report, the user has the opportunity to customize the report by filtering and selecting various elements. We call these elements **Parameters**. Several parameters can be combined to customize a report. And once a set of parameters is selected, it can be applied to many different report types. Each user can customize his or her own reports and save them for later use.

In addition, an administrator can create a set of **Quick Reports** which have been pre-customized and viewable by all constituents.

Student Profile with Objectives

STATE Grade 5 2009

Student: Allard, Alva
 Grade: 5
 ID: 9078403616
 DOB: 05/18/1998

District: North Willows
 School: Green Elementary School
 Class: Ms. Potter

	RS	MaxPts	PC	SS	PERF	Performance Level
MATHEMATICS	22	54	41	218	Warn.	Warn.

Objectives/Strands	Number Correct	Student Percent Correct	State Average Percent Correct
Mathematics	22 of 54	41	69
Math Multiple Choice	13 of 29	45	71
Math Open Response	9 of 20	45	67
Math Short Answer	0 of 5	0	69
Number Sense	5 of 18	28	70
5.N.1 Powers of Ten	0 of 1	0	78
5.N.2 Place Value	1 of 1	100	70
5.N.3 Positive Numbers	0 of 1	0	67
5.N.4 Fractions	0 of 1	0	64
5.N.5 Common Equivalent	0 of 5	0	71
5.N.6 Number Line	1 of 1	100	48
5.N.7 Compare & Order #s	0 of 1	0	48
5.N.8 Common Fact. & Mult.	0 of 1	0	75
5.N.9 Mult.Div. Whole #	1 of 2	50	74
5.N.10 Use of Parentheses	1 of 1	100	90
5.N.12 Whole #s & Dec.	0 of 1	0	81
5.N.13 Positive Fractions	1 of 1	100	43
5.N.14 Estimate	0 of 1	0	86
Patterns, Relatns & Alg.	6 of 14	43	77
5.P.1 Extending Patterns	2 of 6	33	80
5.P.2 Replace Variables	0 of 1	0	71
5.P.3 Props. of Equal.	1 of 1	100	69
5.P.4 Concrete Models	1 of 2	50	76
5.P.5 Proportional Relat.	0 of 2	0	72
5.P.6 Graph/2 Variables	2 of 2	100	80
Geometry	3 of 7	43	58
5.G.2 3-Dimen. Shapes	2 of 5	40	50
5.G.4 Graphing	1 of 1	100	84
5.G.6 Line Symmetry	0 of 1	0	74
Measurement	4 of 7	57	63
5.M.1 Perimeter & Area	3 of 4	75	60
5.M.3 Unit Conversions	1 of 1	100	75
5.M.4 Rect. Prisms	0 of 1	0	77
5.M.5 Int. Angles of Tri.	0 of 1	0	52
Data Analysis	4 of 8	50	70
5.D.1 Compare Data Sets	0 of 2	0	60
5.D.2 Plots & Graphs	0 of 1	0	72
5.D.3 Predict Probability	4 of 5	80	74

This is a Proficiency Plan for: Alva Allard.

Alva did not show proficiency for promotion to the next grade level requirement

___ Parent conference.

___ Participation in an afterschool activity.

Agreed on: _____

Student Profile with Objectives

What is special about this report?

- Optionally, create a custom letter to print along with the students' test scores.
- Use the Cutoff parameter to have TestWiz filter students based on a range of scores that you determine.
- Change the graph with the Display Score parameter.
- Select students by demographic characteristics, such as students with IEP's.

State Test, MAP, and DIBELS

Student: Armenta, Amparo
 Grade: 4
 ID: 9078403366
 DOB: 12/23/1998

District: North Willows
 School: Green Elementary School
 Class: Mr. Dumbledore

STATE Grade 4 2009
 5/1/2009

	PC	SS	PERF
ENGLISH LANG. ARTS	58	228	NI
ELA - Mult. Choice	69		
ELA - Open Response	31		
ELA - Writing	60		
Literature	56		
Language	75		

MAP Grade 3 Survey
 3/15/2008

	RIT	RITLev	NPR
READING	194		35
Vocabulary/Concept Dev	191	Low	
Literary Texts	184	Low	
Informational Texts	199	Avg	
Genre-Fiction/Nonfictn	194	Avg	
Style and Language	200	Avg	

MAP Grade 3 Survey
 1/15/2008

	RIT	RITLev	NPR
READING	191		37
Vocabulary/Concept Dev	196	Avg	
Literary Texts	189	Low	
Informational Texts	180	Low	
Genre-Fiction/Nonfictn	181	Low	
Style and Language	212	High	

DIBELS Grade 3-Fall-Screening
 9/30/2007

	RS	Risk	NPR
Oral Reading Fluency	141	LowRisk	91

DIBELS Grade 2-Spring-Outcomes
 5/31/2007

	RS	Risk	NPR
Oral Reading Fluency	174	LowRsk	96

Student History

What is special about this report?

- View results for different tests on one page - up to 10 different tests at a time.
- Gives current teacher an easy way to view students' performance on past tests.
- Control the subtests and scores that will print.
-

Students w Warning in Math - Ranked

STATE Grade 5 2009

Grade: 5
 District: North Willows
 School: Green Elementary School
 Class: Mr. Snape

Givens, Mario ID: 9078403702 DOB: 05/04/1998

	MATH	MATHmc	MATHor	MATHsa	Number	Patrn	Geom	Meas	Stat
RS	24	9	12	3	5	8	4	3	4
MaxPts	54	29	20	5	18	14	7	7	8
PC	44	31	60	60	28	57	57	43	50
SS	218								
PERF	Warn.								

Harrington, Phil ID: 9078402797 DOB: 02/02/1998

	MATH	MATHmc	MATHor	MATHsa	Number	Patrn	Geom	Meas	Stat
RS	24	17	5	2	5	13	1	0	5
MaxPts	54	29	20	5	18	14	7	7	8
PC	44	59	25	40	28	93	14	0	63
SS	218								
PERF	Warn.								

Judge, Jasmin ID: 9078405577 DOB: 05/31/1998

	MATH	MATHmc	MATHor	MATHsa	Number	Patrn	Geom	Meas	Stat
RS	24	14	9	1	6	11	1	1	5
MaxPts	54	29	20	5	18	14	7	7	8
PC	44	48	45	20	33	79	14	14	63
SS	218								
PERF	Warn.								

Wisniewski, Erma ID: 9078404926 DOB: 06/28/1998

	MATH	MATHmc	MATHor	MATHsa	Number	Patrn	Geom	Meas	Stat
RS	24	12	8	4	10	7	3	2	2
MaxPts	54	29	20	5	18	14	7	7	8
PC	44	41	40	80	56	50	43	29	25
SS	218								
PERF	Warn.								

Camarillo, Danica ID: 9078404466 DOB: 07/18/1998

	MATH	MATHmc	MATHor	MATHsa	Number	Patrn	Geom	Meas	Stat
RS	23	12	9	2	4	10	3	0	6
MaxPts	54	29	20	5	18	14	7	7	8
PC	43	41	45	40	22	71	43	0	75
SS	218								
PERF	Warn.								

Allard, Alva ID: 9078403616 DOB: 05/18/1998

	MATH	MATHmc	MATHor	MATHsa	Number	Patrn	Geom	Meas	Stat
RS	22	13	9	0	5	6	3	4	4
MaxPts	54	29	20	5	18	14	7	7	8
PC	41	45	45	0	28	43	43	57	50
SS	218								
PERF	Warn.								

Lockett, Susie ID: 9078403616 DOB: 09/24/1997

	MATH	MATHmc	MATHor	MATHsa	Number	Patrn	Geom	Meas	Stat
RS	22	13	9	0	5	6	3	4	4
MaxPts	54	29	20	5	18	14	7	7	8
PC	41	45	45	0	28	43	43	57	50
SS	218								
PERF	Warn.								

Class Student List

What is special about this report?

- Control the Subtests and Scores that will print on the report.
- Use the **Cutoff** parameter to have TestWiz filter students based on a range of scores that you determine.
- Rank order the list.
- Run this report for individual teachers, schools, or the whole district.
- Choose to print demographic characteristics under each student's name.

Class History

Class: Ms. Malfoy

School: Lincoln Jr Sr High

District: North Willows

	STATE Grade 8 2009			MAP Grade 8 Survey			MAP Grade 8 Survey				
	5/1/2009			1/15/2009			9/15/2008				
	PC	SS	PERF		RIT	RITLev	NPR		RIT	RITLev	NPR
Angeles, Winnifred 9078403968 9/16/1993	ELA	46	226	NI	READNG		205		206		16
	ELAmc	47			Vocab		196	Low	195	Low	
	ELAor	44			LitTxt		214	Low	217	Avg	
	Lit	46			InfTxt		201	Low	201	Low	
	Lang	50			Genre		213	Low	202	Low	
	MATH	28	214	Warn.	Style		202	Low	223	Avg	
	Number	29			MATH		192		188		1
	Pattnr	47			NumSens		171	Low	174	Low	
	Geom	29			Patterns		188	Low	192	Low	
	Meas	14			Geom		198	Low	203	Low	
	Stat	9			Measur		194	Low	181	Low	
					Data		203	Low	189	Low	
Anthony, Damien 9078402918 9/29/1994	ELA	87	256	Prof.	READNG				233		85
	ELAmc	94			Vocab				229	High	
	ELAor	69			LitTxt				238	High	
	Lit	87			InfTxt				228	High	
	Lang	83			Genre				225	Avg	
	MATH	80	250	Prof.	Style				251	High	
	Number	71			MATH		241		237		66
	Pattnr	93			NumSens		233	Avg	236	Avg	
	Geom	71			Patterns		240	High	235	Avg	
	Meas	86			Geom		250	High	224	Avg	
	Stat	73			Measur		236	Avg	251	High	
					Data		247	High	241	High	
Archibald, Felice 9078406551 3/15/1995	ELA	83	252	Prof.	READNG			82	232		83
	ELAmc	97			Vocab		254	High	235	High	
	ELAor	50			LitTxt		238	High	239	High	
	Lit	80			InfTxt		214	Low	228	High	
	Lang	100			Genre		231	High	230	High	
	MATH	57	230	NI	Style		226	Avg	229	High	
	Number	64			MATH		232		233		57
	Pattnr	40			NumSens		234	Avg	227	Avg	
	Geom	57			Patterns		231	Avg	234	Avg	
	Meas	86			Geom		240	High	239	High	
	Stat	55			Measur		222	Low	231	Avg	
					Data		233	Avg	233	Avg	
Ayes, Taylor 9078403258 10/30/1994	ELA	75	246	Prof.	READNG			45	217		41
	ELAmc	86			Vocab		213	Low	215	Avg	
	ELAor	50			LitTxt		230	High	208	Low	
	Lit	74			InfTxt		219	Avg	214	Low	
	Lang	83			Genre		214	Low	225	Avg	
	MATH	78	248	Prof.	Style		223	Avg	224	Avg	
	Number	93			MATH		245		243		79
	Pattnr	73			NumSens		246	High	258	High	
	Geom	57			Patterns		247	High	249	High	
	Meas	86			Geom		236	Avg	229	Avg	
	Stat	73			Measur		250	High	228	Avg	
					Data		247	High	250	High	
Bandy, Cherly 9078404181 8/7/1995	ELA	27	214	Warn.	READNG		187		190		4
	ELAmc	28			Vocab		197	Low	197	Low	
	ELAor	25			LitTxt		180	Low	191	Low	
	Lit	28			InfTxt		179	Low	197	Low	
	Lang				Genre						
	MATH				Style						
	Number				MATH						1
	Pattnr				NumSens						
	Geom				Patterns						
	Meas				Geom						
	Stat				Measur						
					Data						

Class History

What is special about this report?

- View a class or school student list with up to (4) multiple assessment results.
- Customize the subtests and scores for each of the tests separately.
- Apply the Cutoff, and Special Codes parameters to filter the students.

School Item Analysis vs. State

STATE Grade 10 2009

District: North Willows
 School: Lincoln Jr Sr High

Grade: 10

Math - Mult. Choice - Student Counts: All Students=1 19; State Average=All;

Multiple choice items are based on Percent. Open response items are averages of Raw Scores

Item	All Students	State Average	Diff	Omit	Mult	A	B	C	D	Item Description
1	79	82	-3.0	0	0	0	79	11	11	10-D-1. Find the median of scores in a table
2	47	70	-23.0	0	0	21	16	47	16	10-N-4. Estimate the product of multiplying real numbers
3	32	65	-33.0	0	0	32	32	5	32	10-P-4. Find the expression equivalent to a polynomial expression
4	68	54	14.0	5	0	68	16	5	5	10-P-6. Find the graph representing an inequality
5	42	55	-13.0	0	0	32	42	16	11	10-M-4. Find the least actual value corresponding to a rounded value
6	53	60	-7.0	0	0	11	53	21	16	10-N-3. Find the approximate value of an expression with square roots
7	63	78	-15.0	0	0	16	63	21		10-N-2. Evaluate an equation for a given value
8	63	58	5.0	0	0	5	5	26	63	10-G-1. Identify a polygon based on the number of its diagonals
9	79	81	-2.0	0	0	11	79	0	11	10-D-1. Evaluate the median of values in a table
10	26	45	-19.0	0	0	26	26	16	32	10-P-3. Find expression equivalent to difference of two polynomials
11	32	60	-28.0	0	0	5	42	32	21	10-N-1. Evaluate an expression having a root and an exponent
12	26	54	-28.0	5	0	32	26	32	5	10-P-2. Find the slope of a line from its equation
13	53	75	-22.0	0	0	0	37	53	11	10-N-2. Evaluate an expression having an absolute value
14	63	77	-14.0	0	0	5	16	16	63	10-D-2. Find the equation of a line fitting scatterplot data points
22	53	82	-29.0	0	0	11	16	21	53	10-P-1. Given the rule, find the eighth term of a sequence
23	58	74	-16.0	0	0	21	5	58	16	10-G-3. Compare measures of angles for a transverse line
24	42	46	-4.0	0	0	21	16	21	42	10-P-7. Estimate the value of principal plus compound growth
25	16	54	-38.0	0	0	16	0	74	11	10-N-1. Find expression equivalent to product of two exponentials
26	32	54	-22.0	0	0	11	5	53	32	8-D-4. Find probability of selecting a point on an area model
27	16	62	-46.0	0	0	37	26	16	21	10-D-1. Interpret a graph to determine data values
28	37	54	-17.0	0	0	11	0	53	37	10-M-3. Determine ratio of areas of two circles, given ratio of radii
29	47	54	-7.0	0	0	47	21	11	21	10-P-2. Find another point on a line, given slope and a point on it
30	42	63	-21.0	0	0	11	42	42	5	10-G-4. Find corresponding side of similar triangle, given the other
32	26	53	-27.0	0	0	26	16	32	26	10-P-7. Find a total number given its percentage value and percent
33	58	74	-16.0	0	0	21	16	58	5	10-D-1. Find the median value of data values in a circle graph
34	32	59	-27.0	0	0	21	32	16	32	10-M-1. Compute the area of an irregular polygon having right angles
35	37	63	-26.0	0	0	26	32	5	37	10-P-2. Compute the slope of a line on a coordinate grid
36	21	56	-35.0	0	0	26	26	26	21	10-M-1. Find the shape having an area equal to a parallelogram
37	16	56	-40.0	0	0	16	47	21	16	10-P-6. Find the inequality represented by a graph
38	32	44	-12.0	0	0	16	21	32	32	10-G-9. Find the transformation that transforms one image to another
39	37	45	-8.0	0	0	32	26	5	37	10-D-2. Find the scatterplot whose line of best fit has a slope of 2
40	26	57	-31.0	0	0	16	26	26	32	10-G-5. Find the hypotenuse of a right triangle given its legs

Item Analysis

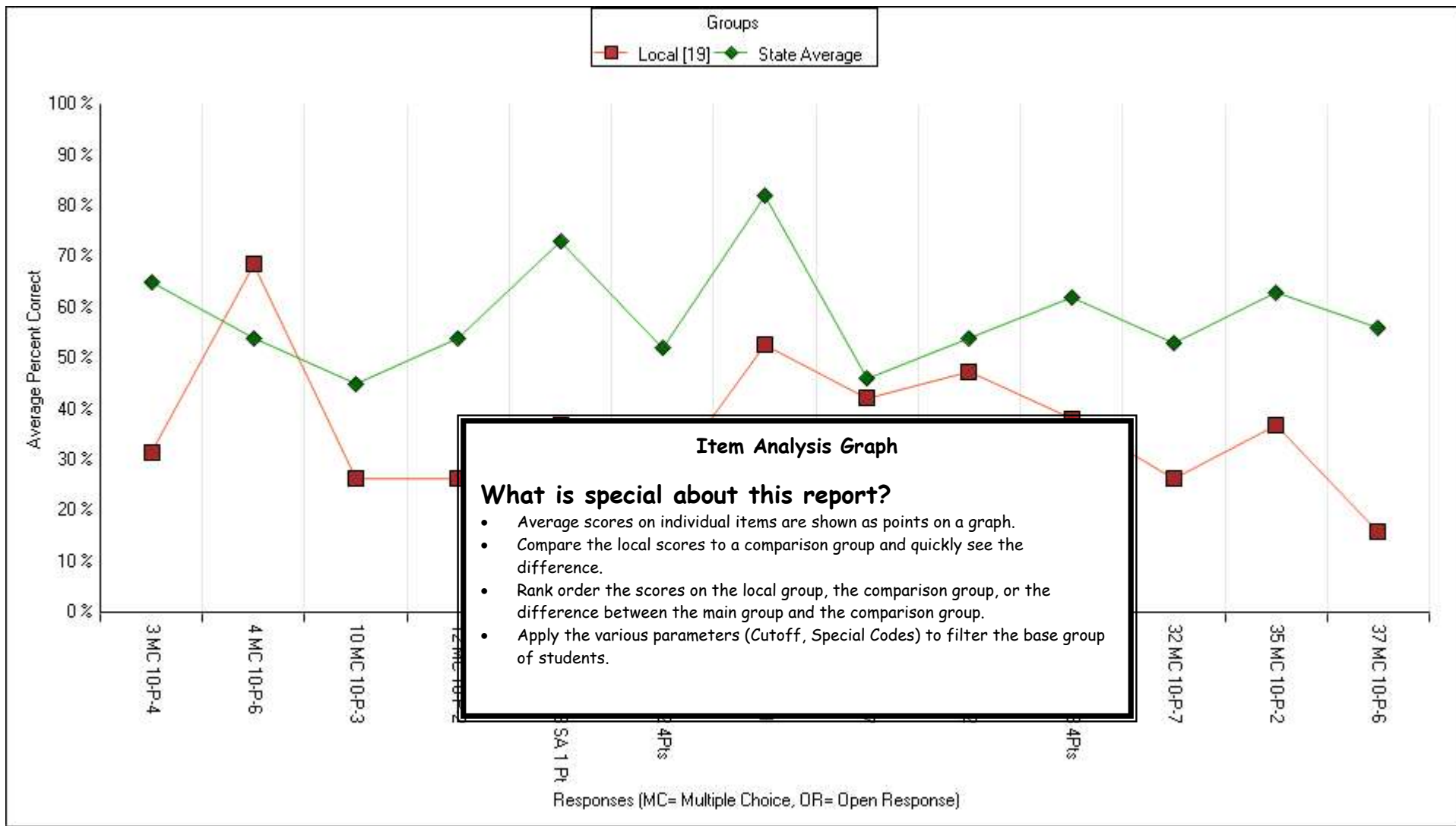
What is special about this report?

- This report can be run for a class, school, the whole district, or any sub-group of students.
- Average scores are shown for each item as well as the percent of students responding with each possible response.
- Compare the local scores to a comparison group and see the difference.
- Rank order the items by the local group, the comparison group, or the difference between the two.
- Apply the various parameters (Cutoff, Special Codes) to filter the base group of students.

Item Analysis Graph-Local vs. State

STATE Grade 10 2009

District: North Willows
 School: Lincoln Jr Sr High
 Students included: 19
 Subtest: Patterns,Relat.& Algebra
 Rank Order: None



District Math Compared to State

STATE Grade 5 2009

Grade: 5

District: North Willows

District Average based on MAX of 139 students;

Objectives/Strands	Maximum Points	District Average Percent Correct	State Average Percent Correct	Difference
Mathematics	54	59	69	-10
Math Multiple Choice	29	61	71	-10
Math Open Response	20	54	67	-13
Math Short Answer	5	64	69	-5
Number Sense	18	54	70	-16
5.N.1 Powers of Ten	1	54	78	-24
5.N.2 Place Value	1	65	70	-5
5.N.3 Positive Numbers	1	55	67	-12
5.N.4 Fractions	1	45	64	-19
5.N.5 Common Equivalent	5	45	71	-26
5.N.6 Number Line	1	39	48	-9
5.N.7 Compare & Order #s	1	25	48	-23
5.N.8 Common Fact. & Mult.	1	73	75	-2
5.N.9 Mult.Div. Whole #	2	68	74	-6
5.N.10 Use of Parentheses	1	85	90	-5
5.N.12 Whole #s & Dec.	1	77	81	-4
5.N.13 Positive Fractions	1	24	43	-19
5.N.14 Estimate	1	78	86	-8
Patterns, Relatns & Alg.	14	71	77	-6
5.P.1 Extending Patterns	6	75	80	-5
5.P.2 Replace Variables	1	78	71	7
5.P.3 Props. of Equal.	1	60	69	-9
5.P.4 Concrete Models	2	66	76	-10
5.P.5 Proportional Relat.	2	65	72	-7
5.P.6 Graph/2 Variables	2	76	80	-4
Geometry	7	48	58	-10
5.G.2 3-Dimen. Shapes	5	35	50	-15
5.G.4 Graphing	1	86	84	2
5.G.6 Line Symmetry	1	73	74	-1
Measurement	7	51	63	-12
5.M.1 Perimeter & Area	4	50	60	-10
5.M.3 Unit Conversions	1	68	75	-7
5.M.4 Rect. Prisms				
5.M.5 Int. Angles of Tri.				
Data Analysis				
5.D.1 Compare Data Sets				
5.D.2 Plots & Graphs				
5.D.3 Predict Probability				

Objectives Summary

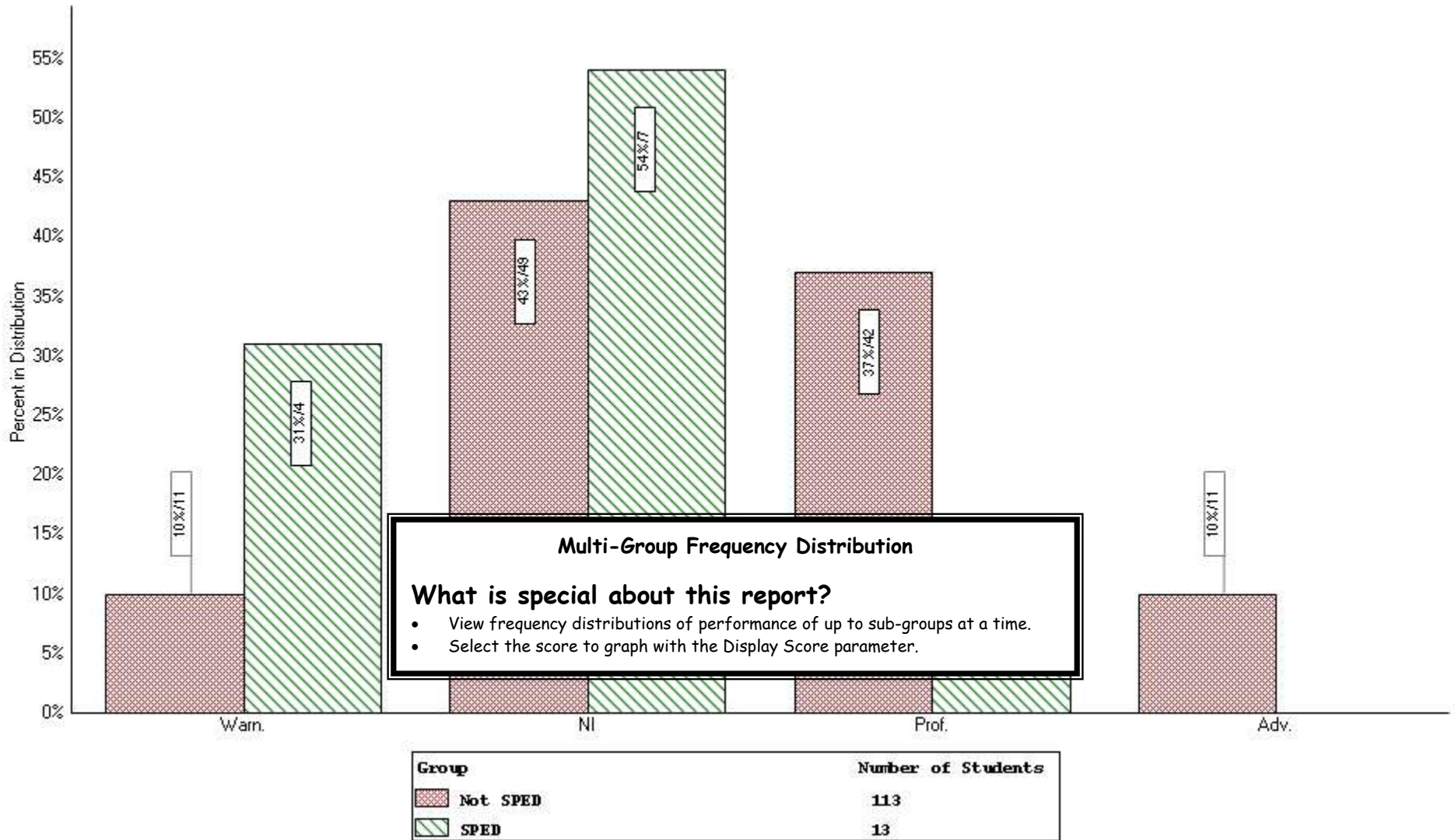
What is special about this report?

- This report can be printed for any group of students - class, school, district, and any sub-group.
- It shows performance on learning standards.
- Compare one group to another and see the difference.
- This report is essential when evaluating curriculum alignment to State standards.

SPED vs Non-SPED

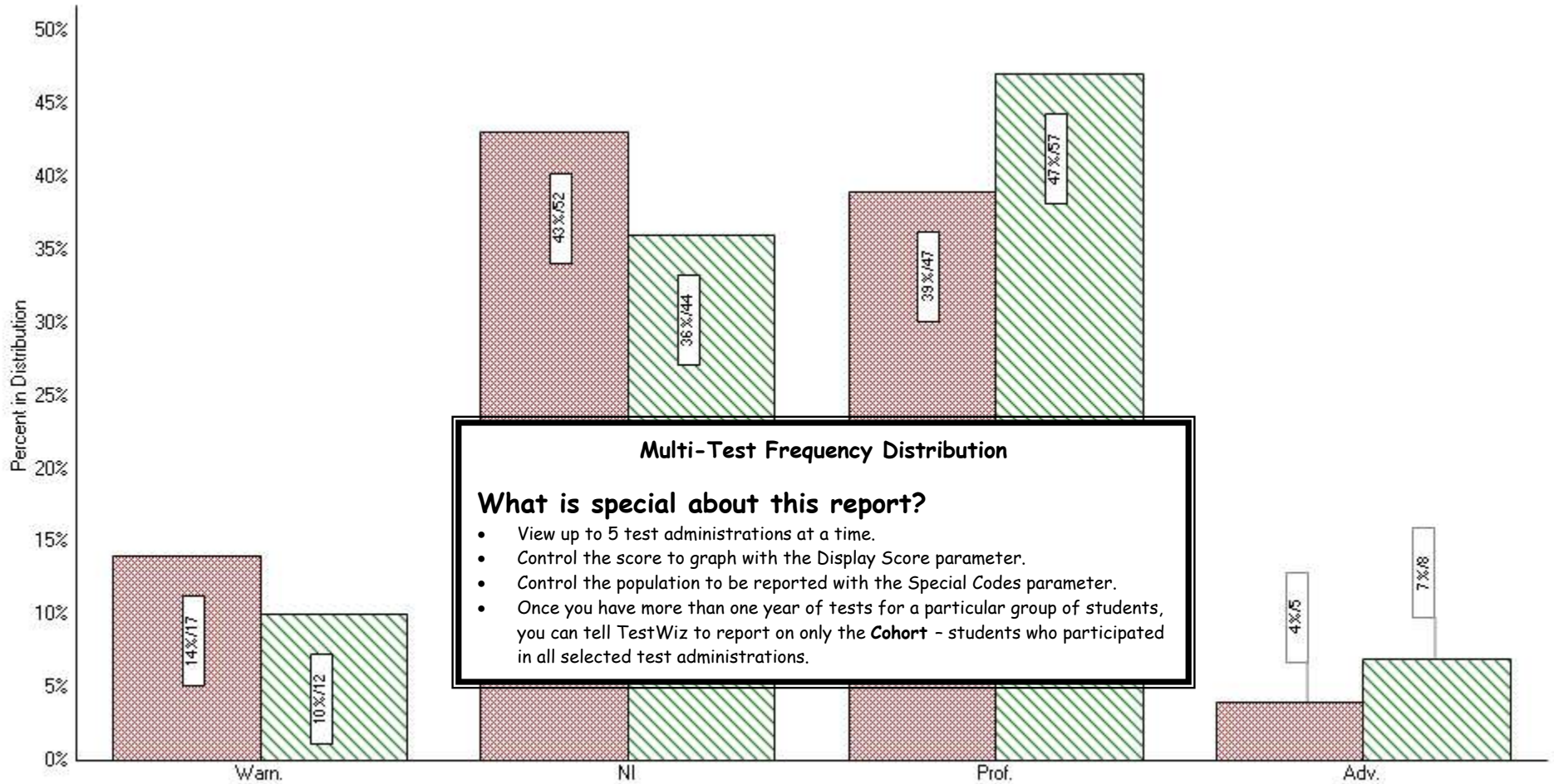
STATE Grade 4 2009 (5/1/2009)

District: North Willows
 Subtest: ENGLISH LANG. ARTS
 Display Score: Performance Level



District Multi-Test Frequency Distribution Report by Performance Level

District: North Willows
 Population: Cohort
 Subtest: ENGLISH LANG. ARTS
 Display Score: Performance Level



Test	Grade	Test Date	Number of Students
STAT Grade 4 2008	4	5/1/2008	121
STAT Grade 5 2009	5	5/1/2009	121